



BY APPOINTMENT TO HM QUEEN ELIZABETH II  
SUPPLIERS OF WALLPAPERS, PAINTS & FABRICS  
ARTHUR SANDERSON AND SONS ENGLAND

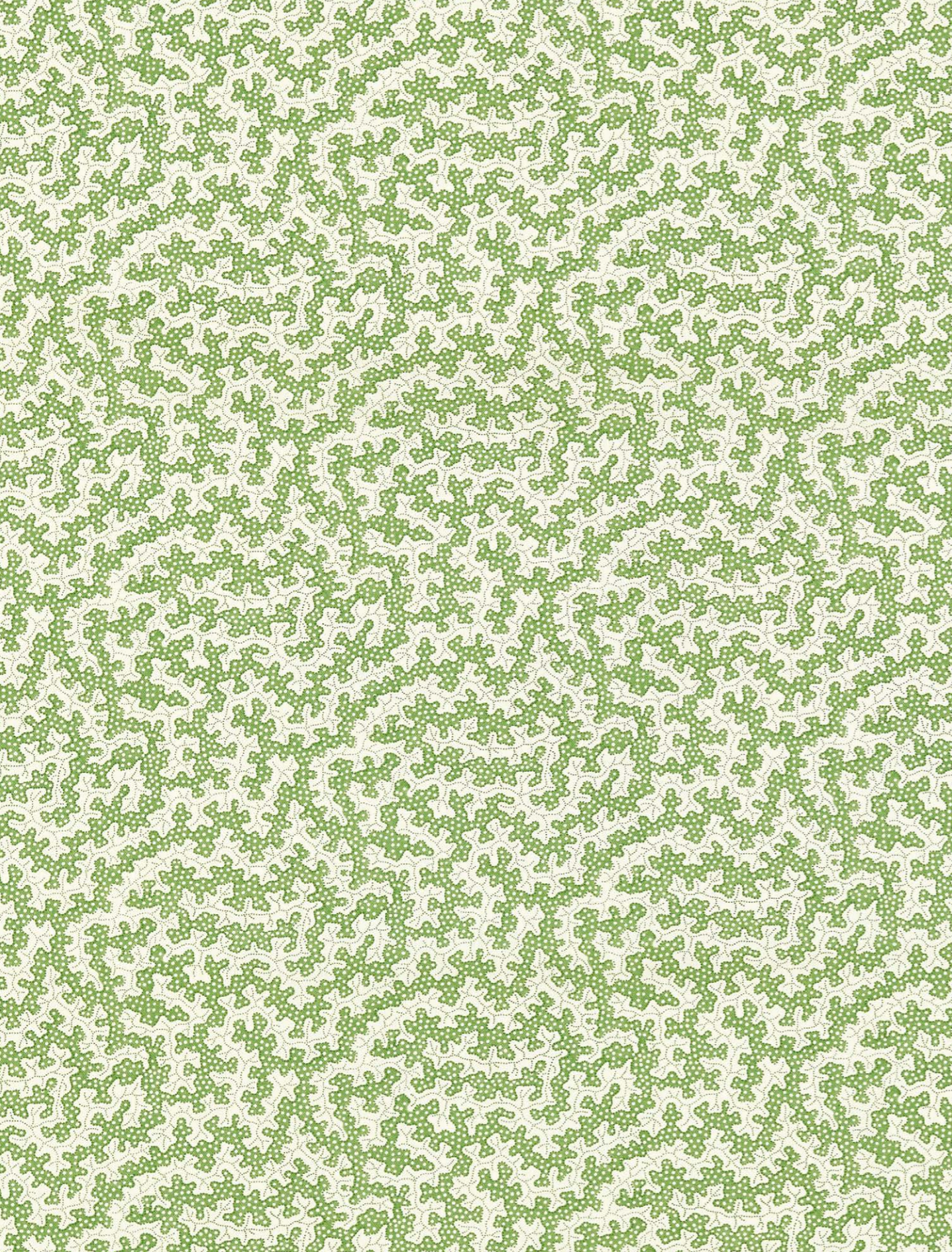
# Sanderson

## ARBORETUM



DIGITAL DESIGN BOOK





# Sanderson

## ARBORETUM

### CELEBRATING THE WONDER OF ENGLAND'S COUNTRYSIDE, ANCIENT WOODLANDS AND PROTECTED WILDLIFE.

An evocative interpretation of majestic trees, secluded glades and indigenous wildlife, Sanderson Arboretum fuses contemporary elements with archival influences to recapture the glory of this much-loved country aesthetic.

New for SS23, statement creations combine with a selection of bestselling designs in a launch that beautifully reflects the wonder of woodland life.

Highlighting the decline of their natural habitat, frogs, woodpeckers and goldfinches find their home amongst intricate paintings of nodding bluebells, springtime primrose, wild dogrose, and age old sycamore and oak trees. A recipe for positivity and the opportunity to reconnect with nature, this collection reminds us of the restorative powers the countryside provides.

Rebecca Craig, lead designer at Sanderson explains, "Arboretum is the Latin name for 'a place with trees', which not only provides a beautiful landscape, but also a focus for research and preservation. From the relaxing benefits of forest bathing to spiritual and symbolic associations, Arboretum raises the awareness of these special habitats, and the endangered species that live there."

Amongst a stunning array of designs, Forest of Dean's magical hand guided crewelwork scene, Truffle's archival blend of texture and tone, and Ancient Canopy's stunning impressionist vista of age old woodland and secluded glades introduce an impressive choice of statement pattern.

Sycamore and Oak's striking 3m wallpaper panel is a hand painted celebration of the English countryside, translated into a fresh botanical panorama of gorgeous, layered trees, intricate flowers and delicate wildlife. Launching alongside Arboretum is Pinetum Prints, a book of six smaller scale fabrics that can be used in combination with statement pieces to create a harmonious look.

Most fabrics have been produced using our new digital pigment inks, which thanks to their low water consumption and energy usage, are considered one of the most sustainable and environmentally friendly ink options available.

### ALL WALLPAPERS AND FABRICS PRINTED IN THE UK

The collection comprises three books:

Arboretum Fabrics and Embroideries, Arboretum Wallpapers and Pinetum Coordinates









## RUBUS *with* ROBIN'S WOOD

Beautifully hand painted in the Sanderson studio, these plump berries look good enough to eat. Sharing the family name for raspberries and blackberries, this pretty, woodland inspired wallpaper brings the outdoors in. A coordinating fabric is available.

Robin's Wood is an area of diverse flora, fauna and ancient woodland thought to date back to after the last ice age. Inspired by an archive document, oak and sycamore leaves display a chalky, handmade appearance in this multicoloured wallpaper which captures the beauty of surface printing. A choice of three colourways allude to the changing seasons.



DEVON GREEN



ROBIN'S WOOD

217223



RUBUS

217227





## WOODLAND CHORUS *with* PINETUM STRIPE

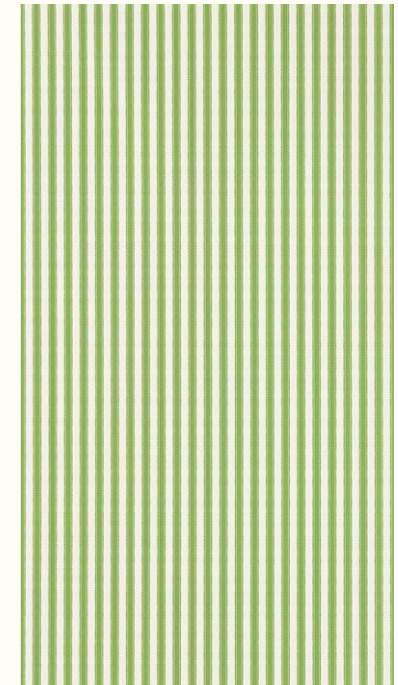
Exquisite depictions of British birds make their home on the delicate branches in this all-over patterned wallpaper. Reproduced in two new contemporary colourways, Woodland Chorus is one of our bestselling designs. Inspired by an 18th century painting of plants and animal, gravure printing shows the motif's fine detail and exceptional colour. Also available in a range of fresh pastel shades and as a coordinating fabric.



ARTICHOKE



WOODLAND CHORUS 217230



PINETUM STRIPE 217255





## ANCIENT CANOPY

This impressionist scene of ancient trees and arched, bowing branches, creates a dense canopy that draws the eye towards a secluded glade. Offering a feeling of perspective and depth, age old woodlands represent longevity, life, growth and strength. A diverse fabric, layer up for a maximalist look or go natural to create a countryside feel.



ANCIENT CANOPY 227070



WOODLAND CHORUS 217230



SYCAMORE & OAK 227073





## ENGLISH HUES *with* A MODERN TWIST

Six colour stories in varied seasonal tones run throughout the collection, which combines classic English hues with a countryside palette of fresh, uplifting leaf greens.



## SYCAMORE AND OAK *with* OAKNUT STRIPE

A hand painted celebration of English woodland, interpreted into a fresh botanical scene, this stylised 3m panel is a gorgeous representation of layered trees, intricate flowers and delicate wildlife. From woodpeckers to toadstools and butterflies, this uplifting wallpaper comes in three seasonally inspired colourways.

Oaknut's all-over leaf trail is embroidered onto a pinstripe jacquard ground using a beautifully chunky cotton thread. Another name for acorn, Oaknut combines country looks with a classic stripe and matt cotton stitchwork.



SYCAMORE AND OAK 217213



BOTANICAL GREEN



OAKNUT STRIPE 237321





## ARIL'S GARDEN *with* TRUFFLE

Named after a pomegranate's delicious jewel coloured treasures, our trailing Aril's Garden design features stylised flowers, a friendly grasshopper, beetles and a crested tit.

Like the cross section of a truffle, this archive design is made from lines of pin dots on a spotted ground. A lovely mix of texture and tone, Truffle is an ideal coordinate to the entire Sanderson range.



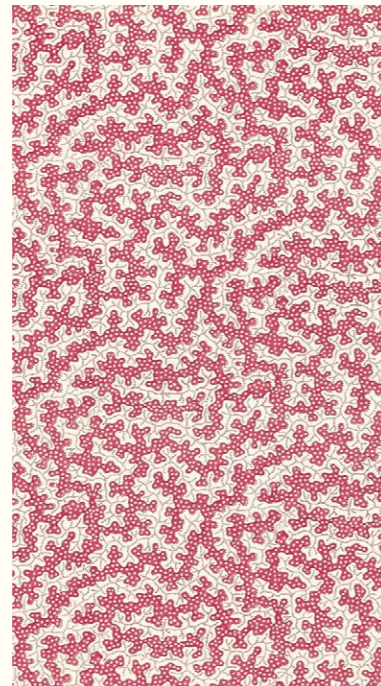
ARIL'S GARDEN

217238



FOREST OF DEAN

237325



TRUFFLE

227081





## FOREST OF DEAN *with* VALLEY STRIPE

An enchanting interpretation of age old woodlands, Forest of Dean is surface printed for an authentically chalky and hand crafted look. Naively painted deer, ferns and butterflies add to this wallpaper's charming aesthetic and the Midnight colourway, with striking jewel colours, introduces a slightly contemporary feel.

Pair with Valley Stripe, a lovely decorative woven stripe that goes with the entire Arboretum collection. Team with large or small-scale wallpaper for a statement look.



VALLEY STRIPE

237329



FIRE PINK



FOREST OF DEAN

217219





## FORAGING EMBROIDERY *with* SESSILE LEAF

Intricately embroidered wild berries, sloes and blossom trail across this woodland inspired design. Fine viscose thread adds a dew like shimmer to a forager's harvest, stitched on a blend of cotton/linen.

The unusually named sessile leaf is where a leaf blade connects directly to a plant's stem, as shown in this oak leaf motif. With a screen printed appearance and hand crafted look, stylised leaves are placed to create a contemporary stripe effect on an archive inspired spotted ground.



SESSILE LEAF

227074



ROWAN BERRY



FORAGING

237314





A PALETTE  
*for all* SEASONS

With a modern twist, this warm, welcoming blend of autumnal shades reaches from russet and plum through to deep indigo blues.







## ENY'S GARDEN *with* FORAGING

This finely detailed trail of stylised flowers is faithfully reinterpreted from an archive document. Meaning 'forest clearing' in Celtic, it's named after the gardens at Enys, one of the earliest and most progressive in Cornwall. A pretty, well-spaced design, see if you can spot our charming grasshopper in his countryside home.

Foraging's intricately embroidered wild berries, sloes and blossom trail across this woodland inspired design. Fine viscose thread adds a dew like shimmer to a forager's harvest, stitched on a blend of cotton/linen.



ENY'S GARDEN

227061



HIGH SEA



FORAGING

237315



ROBIN'S WOOD

227059





## OXBOW *with* DALLIMORE

Meandering across a valley floor and surrounded by tall trees, Oxbow is a stylised river design with a chalky, surface printed appearance. A wonderfully adaptable wallpaper, it's available in three versatile colourways.

This beautiful archival floral trail of rambling woodland flowers is named after Kent's Dallimore Valley. Coloured to sit across the entire Sanderson Arboretum collection, intricate dot detail harks back to the design's block printed origins.



DALLIMORE

227095



PAPAVERA



OXBOW

217250



# WALLPAPER INDEX



ARIL'S GARDEN | 217235



ARIL'S GARDEN | 217236



ARIL'S GARDEN | 217237



ARIL'S GARDEN | 217238



ANCIENT CANOPY | 217220



ANCIENT CANOPY | 217221



ANCIENT CANOPY | 217222



CHESTNUT TREE | 215708



DALLIMORE | 217232



DALLIMORE | 217233



SYCAMORE & OAK | 217211



SYCAMORE & OAK | 217212



SYCAMORE & OAK | 217213



DALLIMORE | 217234



ELYSIAN GEESE | 216608



ELYSIAN GEESE | 216610



EVESHAM DEER | 216618



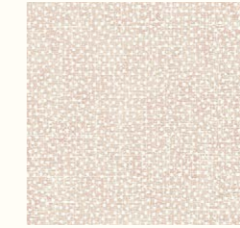
EVESHAM DEER | 216620



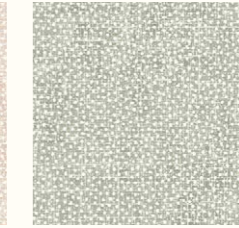
RUBUS | 217227



RUBUS | 217228



SESSILE PLAIN | 217244



SESSILE PLAIN | 217245



SESSILE PLAIN | 217246



FOREST OF DEAN | 217217



FOREST OF DEAN | 217218



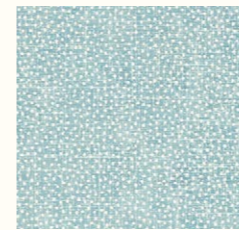
FOREST OF DEAN | 217219



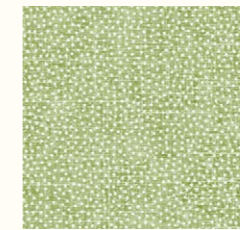
MAGNOLIA & POMEGRANATE | 215722



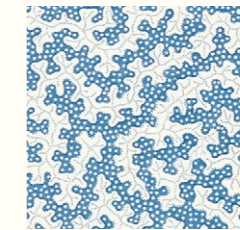
MAGNOLIA & POMEGRANATE | 215724



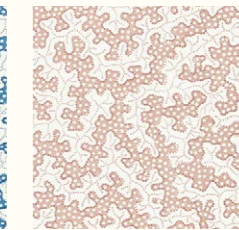
SESSILE PLAIN | 217247



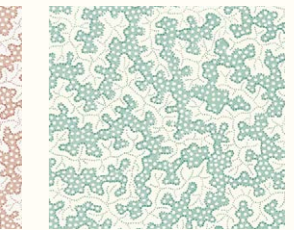
SESSILE PLAIN | 217248



TRUFFLE | 217239



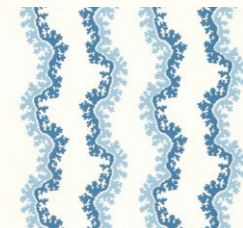
TRUFFLE | 217240



TRUFFLE | 217241



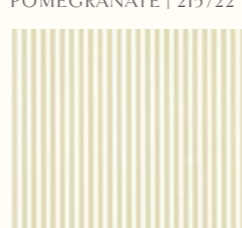
OXBOW | 217249



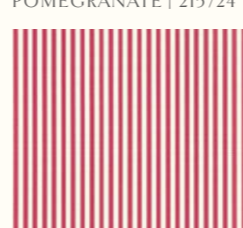
OXBOW | 217250



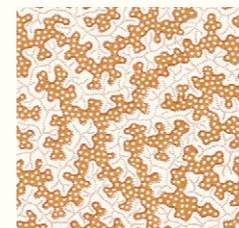
OXBOW | 217251



PINETUM STRIPE | 217252



PINETUM STRIPE | 217253



TRUFFLE | 217242



TRUFFLE | 217243



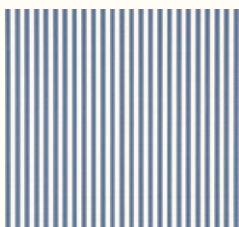
WOODLAND CHORUS  
215703



WOODLAND CHORUS  
215706



WOODLAND CHORUS  
217230



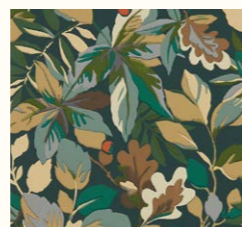
PINETUM STRIPE | 217254



PINETUM STRIPE | 217255



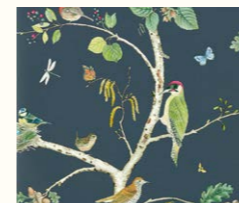
ROBIN'S WOOD | 217223



ROBIN'S WOOD | 217224



ROBIN'S WOOD | 217225



WOODLAND CHORUS  
217231



WOODLAND TOILE  
215716



WOODLAND TOILE  
215717



# FABRIC INDEX



ARIL'S GARDEN | 227066



ARIL'S GARDEN | 227067



ARIL'S GARDEN | 227068



ARIL'S GARDEN | 227069



ANCIENT CANOPY | 227070



ANCIENT CANOPY | 227071



ANCIENT CANOPY | 227072



CHESTNUT TREE | 225513



CHESTNUT TREE | 225517



ENYS GARDEN | 227061



ENYS GARDEN | 227062



ENYS GARDEN | 227063



EVESHAM DEER | 226528



ELYSIAN GEESSE | 226519



ELYSIAN GEESSE | 226520



FERNERY EMBROIDERY  
237319



FERNERY EMBROIDERY  
237320



FORAGING | 237314



FORAGING | 237315



FORAGING | 237316



FOREST OF DEAN | 237324



FOREST OF DEAN | 237325



OAKNUT STRIPE | 237321



OAKNUT STRIPE | 237322



OAKNUT STRIPE | 237323



ROBINS WOOD | 227056



ROBINS WOOD | 227057



ROBINS WOOD | 227058



ROBINS WOOD | 227059



RUBUS | 227064

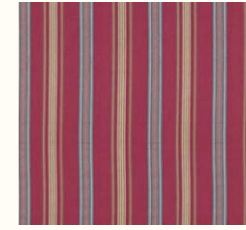
# FABRIC INDEX



RUBUS | 227065



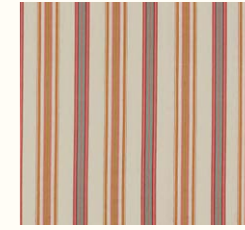
SYCAMORE & OAK | 227073



VALLEY STRIPE | 237326



VALLEY STRIPE | 237328



VALLEY STRIPE | 237329



WILD TULIP | 237317



WILD TULIP | 237318



WOODLAND BERRIES  
225530



WOODLAND BERRIES  
225531



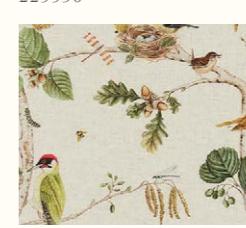
WOODLAND CHORUS  
225509



WOODLAND CHORUS  
225510



WOODLAND CHORUS  
225511



WOODLAND CHORUS  
227060

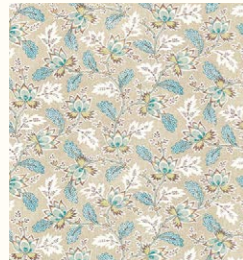


# PINETUM INDEX

Coloured to work seamlessly with the entire Arboretum collection and the wider Sanderson portfolio, Pinetum Prints offers an array of usable and versatile decorating solutions.



DALLIMORE | 227095



DALLIMORE | 227096



DALLIMORE | 227097



DALLIMORE | 227098



FERN FROND | 227078



FERN FROND | 227079



FERN FROND | 227080



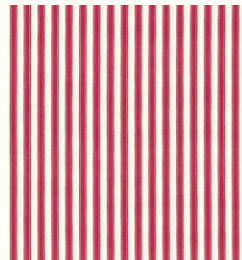
OXBOW | 227092



OXBOW | 227093



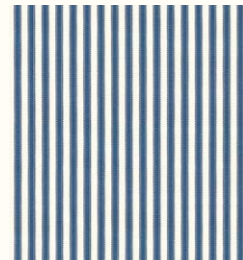
OXBOW | 227094



PINETUM STRIPE | 227087



PINETUM STRIPE | 227088



PINETUM STRIPE | 227089



PINETUM STRIPE | 227090



PINETUM STRIPE | 227091



SESSILE LEAF | 227074



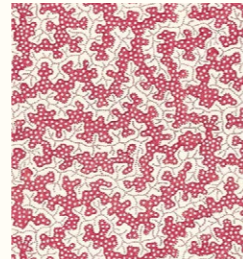
SESSILE LEAF | 227075



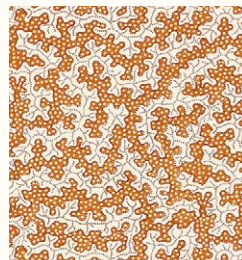
SESSILE LEAF | 227076



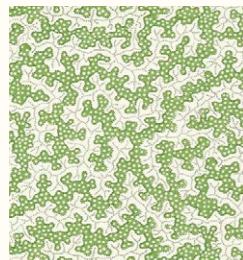
SESSILE LEAF | 227077



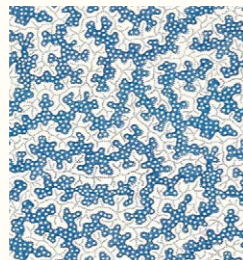
TRUFFLE | 227081



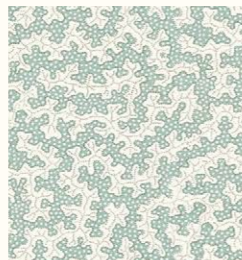
TRUFFLE | 227082



TRUFFLE | 227083



TRUFFLE | 227084



TRUFFLE | 227085



TRUFFLE | 227086







## CONTACT PAGE

---

### LONDON SHOWROOM

Design Centre Chelsea Harbour, First Floor,  
South Dome, Lots Road, London, SW10 0XE

Tel: + 44 203 903 3700

[showroom@sandersondesigngroup.com](mailto:showroom@sandersondesigngroup.com)

### NEW YORK SHOWROOM

D&D Building, 979 Third Avenue,  
Suite 409, New York, NY 10022

Tel +1 212 319 7220

[sales-ny@sandersondesigngroup.com](mailto:sales-ny@sandersondesigngroup.com)

### CHICAGO SHOWROOM

222 W Merchandise Mart Plaza,  
Suite 6-117A, Chicago, IL 60654

Tel +1 312 929 2058

[sales-chicago@sandersondesigngroup.com](mailto:sales-chicago@sandersondesigngroup.com)

### DUBAI SHOWROOM

The Prism Tower, Office 2708, Floor 27, PO Box 391982,  
Business Bay, Dubai, United Arab Emirates

Tel: +971 4361 9766

[infome@sandersondesigngroup.com](mailto:infome@sandersondesigngroup.com)

### NETHERLANDS SHOWROOM

ETC Licht & Interieur, Randweg 20,  
4104 AC Culemborg

Tel: +31 65349 3696

[international@sandersondesigngroup.com](mailto:international@sandersondesigngroup.com)

### GERMANY SHOWROOM

Kronenstrasse 4, 76133 Karlsruhe

Tel: +49 721 981 985 60

[verkauf@sandersondesigngroup.com](mailto:verkauf@sandersondesigngroup.com)

---

@Sanderson1860 | [sanderson.sandersondesigngroup.com](http://sanderson.sandersondesigngroup.com)

A PROUD MEMBER OF SANDERSON DESIGN GROUP