



Little Sanderson  
**ABRACAZOO**

FABRICS & WALLPAPERS



# Little Sanderson ABRACAZOO

Decorating is child's play with Little Sanderson!

Through the eyes of children, the Sanderson stylists have created imaginative and playful settings, full of magic. Enter into the make-believe worlds of pirate Treasure Maps and the fantasy lands of FAIRY CASTLES, or learn by play with the fun but educational ALPHABET ZOO. The spectrum of designs within the first Little Sanderson collection, ABRACAZOO, beautifully illustrates the imaginary worlds of children. The collection ranges from classic themes to more quirky, contemporary imagery; choose from the animated DOGS IN CLOGS, or the vintage TWO BY TWO. With further designs depicting pastimes and playthings, the collection is aimed at the nursery to early school years.

The bright and fresh BRAMLEY CHECKS are the perfect complement to these joyful designs.

All prints and wallpapers are printed in the UK.



## Alphabet Zoo



LEFT CURTAINS: Alphabet Zoo 233924 ABOVE QUILT: Alphabet Zoo 223910 edged in Whitby 233853 RIGHT WALLPAPER: Alphabet Zoo 214026 PAINTON WALL: Cathedral Blue SKIRTING: Silverflake WALLPAPER ON CHEST OF DRAWERS: Alphabet Zoo 214026 QUILT ON COT: Alphabet Zoo 223910 edged in Whitby 233853 BOLSTER CUSHION IN COT: Whitby 233853 with ends in Rye 233878 CUSHION ON FLOOR: Whitby 233853 with centre panel in Alphabet Zoo 223912 BUMPER IN COT: Rye 233878 with ties in Whitby 233853 CHAIR: Carmen LT CUSHION ON CHAIR: Alphabet Zoo 223910





TWO BY TWO



LEFT WALLPAPER: Two by Two 214043 CURTAINS: Deben 232693 with Whitby 233857 applique animals from Two by Two 223901 CUSHION ON CHAIR: Brighton 233869 with applique elephants from Two by Two 233927 RUG: Cressida Charcoal/Linen PAINT Neutral ABOVE CANOPY: Two by Two 233927 PAINT Neutral ABOVE RIGHT CHAIR: Two by Two 223901 with Whitby 233857

RIGHT and BOTTOM WALLPAPER: Going Batty 214017 CURTAINS: Appledore 233891, BLINDS: Going Batty 223899 PILLOWS: Going Batty 223899 BELOW WALLPAPER: Polka 214049



Polka



Going Batty





Ballet shoes

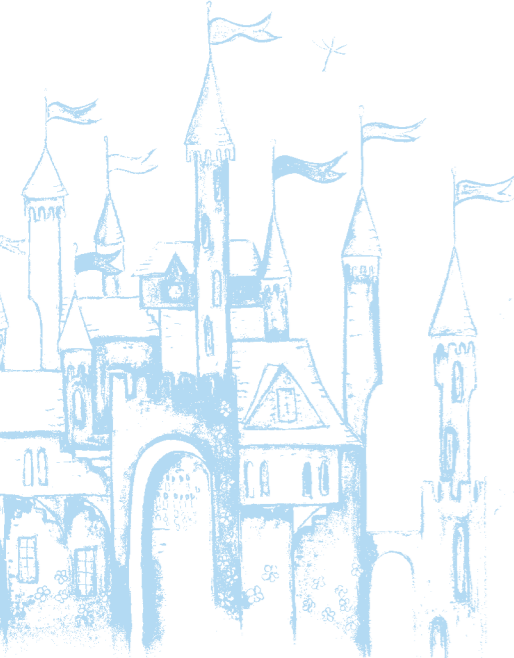


LEFT and ABOVE: WALLPAPER: Ballet shoes 214021 SKIRTING: silverflake CURTAINS: Ballet shoes 223917 CHAIR: Chino 243793 piped in Deben 232693 CUSHION ON CHAIR: Ballet shoes 223919 with oxford edging in Chino 243789 SEATPAD: Whitby 233851 CUSHION ON FLOOR: Chino 243793 piped in Deben 232693 BAG HANGING OFF HOOKS: Whitby 233851 with panel of Ballet shoes 223917, ROUND BOXES made from a selection of fabrics from Bramley Checks.





# Fairy Castle



ABOVE and RIGHT WALLPAPER: Fairy Castle 214045  
 PAINT: Mayflower SKIRTING: Silverflake CURTAINS:  
 Fairyland 223922 trimmed with Drop Bead Fringe  
 232243 CANOPY OVER BED: Fairyland 223923  
 BEDSPREAD: Seaton 233860 EIDERDOWN: Fairyland  
 223921 CUSHIONS FROM LEFT: bolster Fairyland  
 223921 CIRCULAR: Fairyland 223921, Whitby 233851,  
 Fairyland 223922 Rye 233880 Fairyland 223922  
 trimmed with Drop Bead Fringe 232243 and  
 backed in Seaton 233860 bolster: Whitby 233858  
 PILLOWCASE: Adele Housewife pillowcase

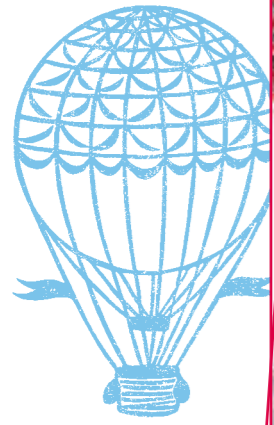


WALLPAPER: Pretty Ponies 214035 CURTAINS:  
 Pretty Ponies 233925 PELMET: Posy Floral  
 223906 trimmed with Bobble Fringe: 232227  
 QUILT ON BED: Made with a selection of  
 fabrics from Abrazaccoo + Bramley Checks  
 UNDERBLANKET: Appledore 233889 CUSHION  
 ON CHAIR: Chino 243789 HORSE BLANKET:  
 Posy Floral 223906 trimmed with Picot Braid  
 232192 BOOKCASE: Blue Streak



Pretty Ponies





Balloons



BELOW LEFT CUSHIONS FROM FRONT VROOM 223915 with Brighton 233671 on side, Vroom 223916 ABOVE and RIGHT WALLPAPER: Balloons 214030 BLINDS: Vroom 223915 CUSHION ON FLOOR: Vroom 223916 backed with Rya 230247 WALLPAPER ON UNIT: Scribbler 214032 PAINT ON UNIT: Blue Delight BEDLINEN: Sanderson Tiger stripe Blue



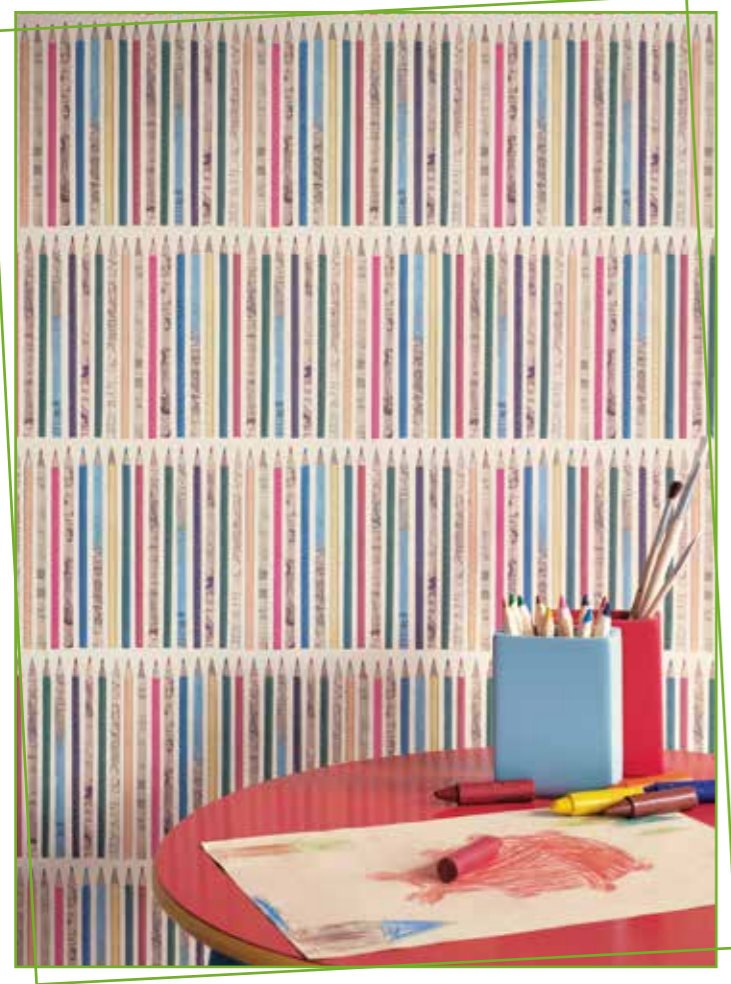
VROOM





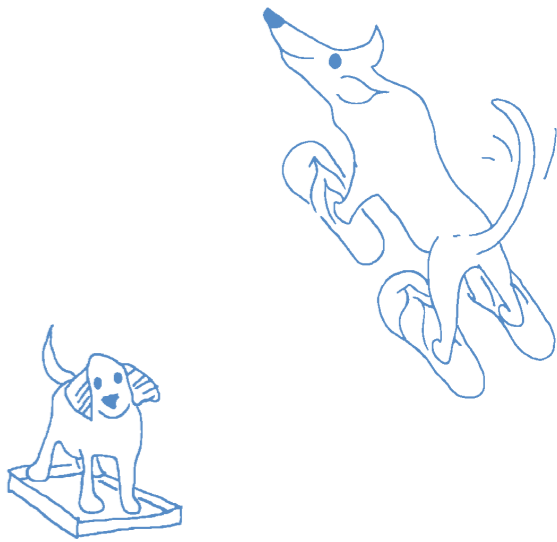
BELOW WALLPAPER: Scribbler 214033 RIGHT  
 WALLPAPER: Treasure Map 214040 BUNTING (made from  
 a selection of): Rye 233882, Treasure Map 223913, Rye  
 233878, Appledore 233893 Seaton 233864, BLIND: Treasure  
 Map 223914 PAINT: Cadet Blue DUFFEL BAG: 223913  
 trimmed with Ruskin DRUGRU321 PILLOW: Chino 243791  
 backed with Seaton 233863 QUILT ON BED (clockwise from  
 top left): Appledore 233893 Treasure Map 223913, Seaton  
 233863, Treasure Map 223914, Seaton 233862, Treasure Map  
 223913 RUG: Ceylon Charcoal/Indigo CUSHION ON RUG: Rye  
 233882 and Seaton 233864 backed with Appledore 233886

# Scribbler





LEFT WALLPAPER: Dogs in Clogs 24012 BLINDS: Seaton 233862  
 CUBE SEAT: front Dogs in Clogs 223909 top: Rye 233882  
 side: Rya 230249 BELOW CURTAINS: Brighton 233871 CHAIR:  
 Armrests in Rye 233882 inside left arm Seaton 233862 inside  
 right arm Appledore 233893 seat and back: Brighton 233871  
 CUSHIONS FROM TOP: BOLSTER Whitby 233853, Appledore  
 233893 backed with Chino 243791, Seaton 233863 backed with  
 Chino 243794, Seaton 233864 and Rye 233882 backed in Rye  
 233878, Whitby 233853 backed in Chino 243782



Bramley Checks



ABOVE CURTAINS: Dogs in Clogs 223909 PAINTON WALLS: Birch White CHAIR:  
 facing side Dogs in Clogs 223909 Armrests in Rye 233882 inside left arm Seaton  
 233862 seat and back: Brighton 233871 CUSHIONS ON CHAIR: Dogs in Clogs 223909  
 circular: Rye 233882 sides in Brighton 233871 BEANBAG: Dogs in Clogs 223909

Dogs in Clogs



# Little Sanderson

## LONDON SHOWROOM

Tel: 0844 543 4749

Email: [enquiries@a-sanderson.co.uk](mailto:enquiries@a-sanderson.co.uk)

## UK HEAD OFFICE

UK Tel: 0844 543 9500

Email: [enquiries@a-sanderson.co.uk](mailto:enquiries@a-sanderson.co.uk)

Export Tel: +44 (0)845 126 9900

Email: [exportoffice@a-sanderson.co.uk](mailto:exportoffice@a-sanderson.co.uk)

Contracts Tel: 0845 123 6810

Fax: 0845 123 6811

Email: [denham@wgbcontracts.com](mailto:denham@wgbcontracts.com)

## NEW YORK SHOWROOM

Tel: +1 800 395 8760

Tel: +1 212 319 7220

Email: [sales-ny@a-sanderson.co.uk](mailto:sales-ny@a-sanderson.co.uk)

## USA HEAD OFFICE

Tel: +1 800 395 8760

Email: [sales-ny@a-sanderson.co.uk](mailto:sales-ny@a-sanderson.co.uk)

## FRENCH SHOWROOM

Tel: +331 4041 1770

Fax: +331 4041 1771

Email: [serviceclient@sandersonfrance.fr](mailto:serviceclient@sandersonfrance.fr)

## DUTCH SHOWROOM

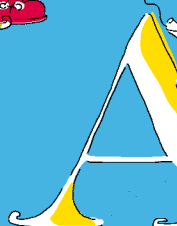
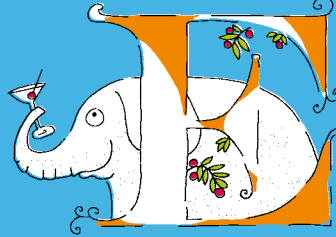
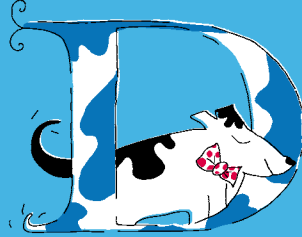
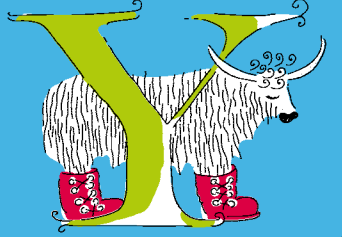
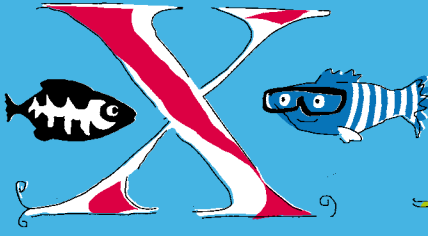
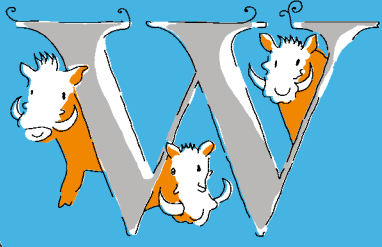
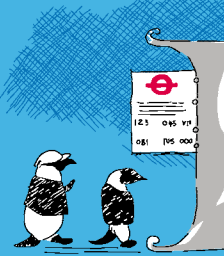
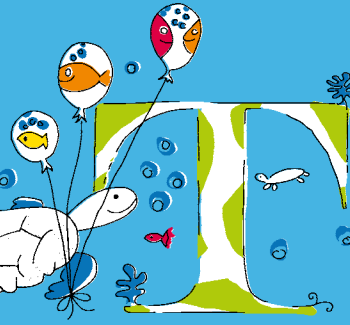
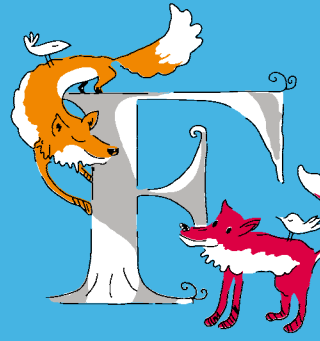
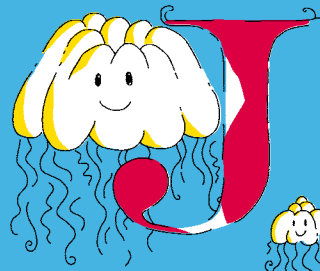
Tel: +44 1895 221 049

Email: [exportoffice@a-sanderson.co.uk](mailto:exportoffice@a-sanderson.co.uk)

## DUBAI SHOWROOM

Tel: +971 (0)4 361 9766

Email: [enquiriesme@walkergreenbank.com](mailto:enquiriesme@walkergreenbank.com)



[sanderson-uk.com](http://sanderson-uk.com)

Visit [sanderson-uk.com](http://sanderson-uk.com) to learn more about these fabrics and wallpapers and thousands of others. Check out the state-of-the-art search functions, enhanced inspiration galleries and improved virtual mood boards.